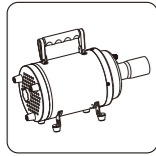
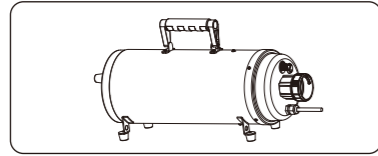


# AEOLUS

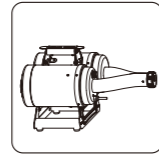
Professional Pet Drying Equipments Supplier



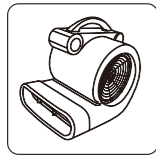
TD-901T



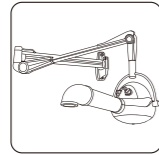
TD-900XT



TD-900CG



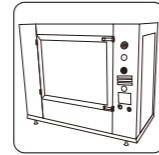
TD-903



TD-905



TD-906



TD-907

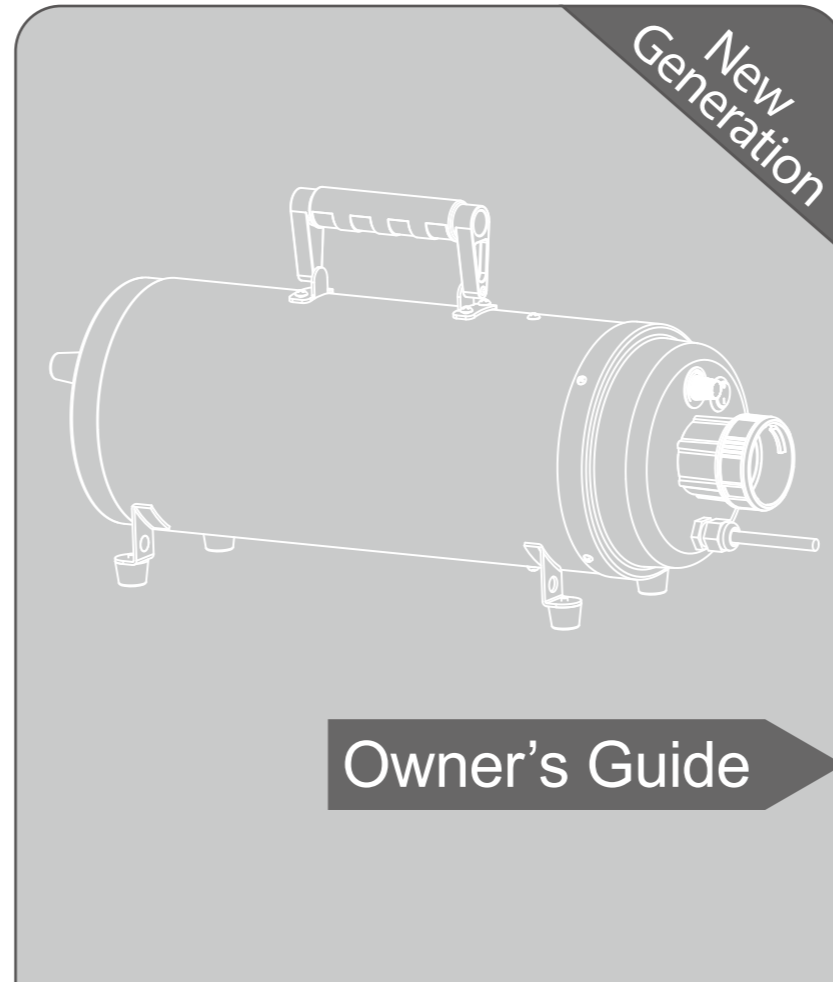
Distributor Contacts



# HERCULES

PET DRYER

TD-900XT



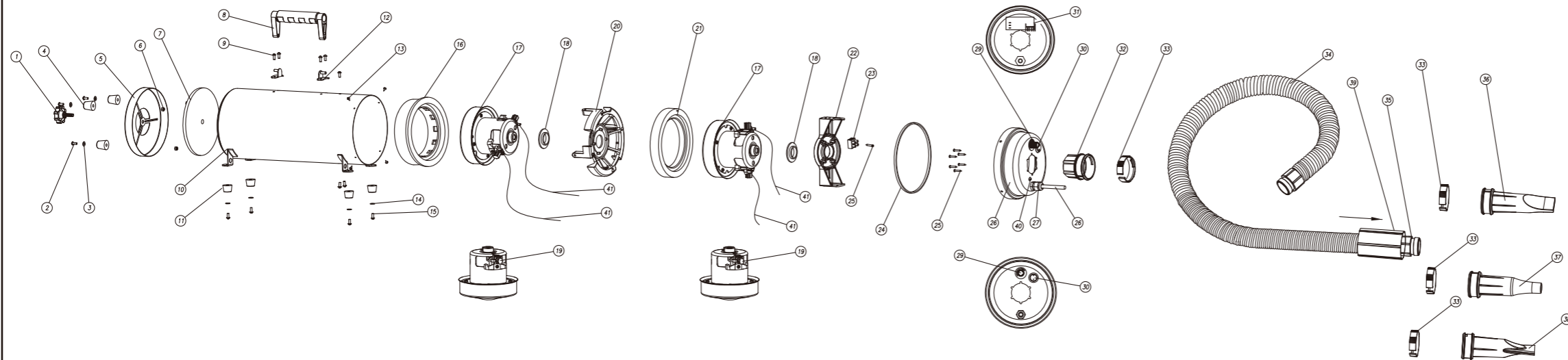
**A**dvanced Safety Control Technology  
**E**xtrremely Strong Blow Force  
**O**ne-click Easy Operation  
**L**ong-lasting Carbon Brush & Motor  
**U**nbelievable Super High Wind Speed  
**S**ave Energy And Eco-friendly



Producer : Shanghai TOEX International Trading Co., Ltd.  
Address : Floor 5, Building 6, No.675 Zhujin Road,  
Songjiang District, Shanghai, 201615, China

Manufacturer : Shanghai Xunyuan Industrial Co., Ltd.  
Address : Building 8, No. 65 Huandong First Road,  
Jinshan District, Shanghai, China

# Structure Chart



Remarks: The chart is only for repair parts order references, the real structure should be subject to current available product; since we may make modifications without notice in formal written form.

Serial No.	Item No.	Part Name	Quantity
1	TD-90001	Rear Cap Fixture Knob	1
2	TD-90002	M4×10 Screw	3
3	TD-90003	Washer	3
4	TD-90004	Rear Cap Rubber Foot	3
5	TD-90005	Rear Cap	1
6	TD-90006	M4 Lock Nut	3
7	TD-90007	Foam Filter	1
8	TD-90008	Handle	1
9	TD-90009	M4×12 Screw and Nut	7
10	TD-90047	Long Housing	1
11	TD-90011	Housing Rubber Foot	4
12	TD-90012	Handle Set	2
13	TD-90013	PA3×10 Self-tapping Screw	4
14	TD-90014	Washer	4
15	TD-90015	M5×10 Screw	4
16	TD-90016	Vibration Absorber Ring	1
17	TD-90017	Motor A	2
18	TD-90018	Rubber Washer	2
19	TD-90019	Carbon Brush	4
20	TD-90046	Dual Motor Fixture Bracket	1
21	TD-90045	Middle Rubber Ring	1
22	TD-90020	Single Motor Fixture Bracket	1
23	TD-90044	Connection Terminal	1
24	TD-90021	Rubber Seal	1
25	TD-90023	PA3×16 Self-tapping Screw	7
26	TD-90043	Front Cap -B	1
27	TD-90025	PG-9 Waterproof Cable Connector	1
28	TD-90026	Power Cable	1
29	TD-90028	Wind Speed Knob	1
30	TD-90030	Power Switch	1
31	TD-90042	PCB-B	1
32	TD-90031	Front Cap D52 Hose Connector	1
33	TD-90032	D52 Nylon Clip	4
34	TD-90033	D52 Flexible Hose	1
35	TD-90034	D52 Hose Connector	2
36	TD-90035	D52 Narrow Nozzle	1
37	TD-90036	D52 Round Nozzle	1
38	TD-90050	D52 Wide Nozzle	1
39	TD-90055	D52 Heat Insulation Sleeve	1
40	TD-90065	M4×8 screw and nut	1
41	TD-90066	High temperature resistant silicone wire	1

-A Brown, 0.75mm<sup>2</sup>×200mm  
 -B Blue, 0.75mm<sup>2</sup>×200mm  
 -C Brown, 0.75mm<sup>2</sup>×360mm  
 -D Blue, 0.75mm<sup>2</sup>×360mm

# The ONLY DRYER in the world which beats every cyclone —HERCULES!

When we hear of the words of hurricane, typhoon and tornado, we will think of devastating force of them, because of the super wind speed.

Let's look back upon the famous cyclones in the history and discover how strong they were.

**Hurricane Katrina**, coverage area as big as the whole UK, the costliest hurricane in American history, peak wind speed: **77m/s**.

**Cyclone Gwenda**, formed in 1999, the most intense Australian tropical cyclone on record, peak wind speed: **68m/s**.

**Hurricane Linda**, the strongest eastern Pacific hurricane on record, damaged all the meteorological instruments on Socorro Island, peak wind speed: **83m/s**.

**Typhoon Tip**, the largest and most intense tropical cyclone on record, the king of typhoons, peak wind speed: **85m/s**.

All of them are deadly and costly disasters, but if we could get the strong wind and super power of cyclones in control, would they contribute to human's benefit?

**The answer is AEOLUS HERCULES dual motor dryer, which brings us unbelievable super high wind speed at 95m/s, defeats every recorded cyclone on the earth.**

## Super Blow Force

After 5 years of continuous research we have launched the new 52mm diameter hose system. This is a much wider hose than previous models which was only 40mm, thus giving the user a higher blow force of 955grams<sup>①</sup>, which is an increase of 45%, and an unmatched wind speed of 95 meters per second<sup>②</sup> which is an increase over previous models by 50%. In order to enhance the blow power we have engineered the air intake vent by three times, and all of these factors now allow an even and stronger flow of air.

## Energy Savings

A better air flow system and a smaller flow friction force, has allowed AEOLUS H-900XT to perform at a higher energy efficient ratio.

AEOLUS TD-900XT will allow for a 30% savings in energy consumption.

## Motor Life Span

AEOLUS TD-900XT will allow for a much extended product life span, based on the following points: Longer carbon brush, improved from 32mm to 38mm, the longest currently on the market. Smaller carbon pellets and a smoother rotor technology, creates smaller sparks which gives the TD-900XT a longer life span by 30% compared to the previous model.

The result of this new motor technology will give the user 800 hours for one pair of carbon brushes, and can be changed an additional two times, to give a total performance time of 2,400 hours.

After much research and development, AEOLUS technology has greatly improved the carbon brush spring, which prevents the spring from damaging the motor and in turn insures a longer life span of the product.

## Maintenance

AEOLUS TD-900XT has improved the component parts of the motor so that, there is a more efficient way to open the housing of the machine, allowing for easy removal of all electrical components. TD-900XT clip replacement technology in the motor, allows for a quicker and easier replacement of the carbon brush, and all component parts.

## Noise Performance

Advanced metal stretching technology in the TD-900XT, has eliminated all welded seams, on the front and rear caps of the machine, as well as the main housing, leading to a fully sealed housing, thus reducing the noise emitted from the machine.

Test results show at the highest wind speed the noise emitted from the TD-900XT is 85 decibels, compared to the current industry standard of 110 -115 decibels, a 20% reduction, which allows the user a more comfortable sound level and performance of the product.

## Safety Performance

TD-900XT offers, high temperature resistant silicone wires, high temperature resistant switch and circuit boards, and emergency cut off switch for an overheated motor, and durable grounded wires allow for the safest usage performance on the market.

## Ease of Use

Aeolus TD-900XT has patented an easy use nozzle attachment which allows the operator to remove the nozzle head with the use of just one finger, with a simple click of the attachment.

Aeolus TD-900XT patented nozzle allows reattachment of nozzle head with just one click.

## Accessories

AEOLUS TD-900XT has designed multiple items for dual purpose use of the machine:

Wall mounting bracket

Groomers' third arm

Please check instruction manual for further details.

Testing Condition:

- 1)2.5m long flexible hose, Φ16mm round nozzle, fixed above the high precision electronic scale at 220mm, record the blow force indication.
- 2)We cannot find any anemoscope to measure the real wind speed of this HERCULES dryer, so what we could do is only estimating the theoretical value by the proportionate relationships between our single motor dryer CYCCLONE and HERCULES.
- 3)65 C means the sensor fixed at the position of 3cm away from the end of round nozzle never takes a value higher than 65 C in a 3 hours continuous testing, when the environmental temperature is at 32 C.

Remarks: all the testing is executed on professional testing platforms.

# Direction for Use

- 1.Plug the flexible hose to the front cap connector.
- 2.Plug in socket with right voltage, switch power on.
- 3.Adjust wind speed and choose suitable nozzle according to your need.
- 4.Turn the wind speed knob back to Minimum and then turn off the power switch after usage
- 5.Unplug the dryer from the mains, unplug the hose and nozzle, and put the machine and accessories back to box.

# Maintenance

- 1.Please clean the sponge filter by washing or wind blowing, be sure to fix the filter again when it's dry.
- 2.Keep the surface clean and dry, and use a dry and soft cloth to clean the painted surface.
- 3.Wet cloth with neutral detergent and wipe to remove stubborn stains and dirt.
- 4.Use only mild neutral detergent.
- 5.When the carbon brushes run out, please renew the brushes following the guide line in this booklet or consult with the professionals.

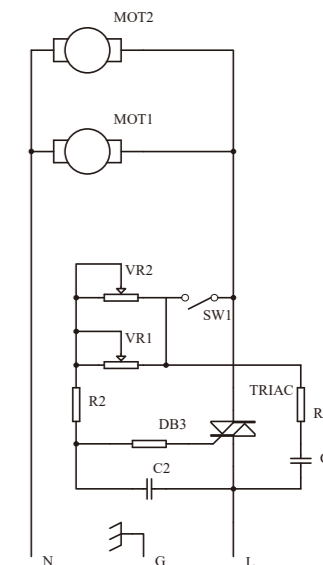
# Parameters

Product Name	HERCULES		Item Number	TD-900XT
Rated Voltage	220V-240V 50Hz	100V-120V 60Hz	Blow Force	955g
Rated Current	10.9A (220V)	21.8A (110V)	Maximum Wind Speed	95m/s (Theoretical Value)
Maximum Power (220V/110V)	2400W		Minimum Wind Speed	38m/s(500W)
Heating Power	—		Noise (on back of the dryer at 0.5m)	96dbA
Maximum Temperature (Environmental Temperature at 32°C)	65°C		Noise (on top of the dryer at 0.5m)	85dbA
Net Weight	6.4kg		Gross Weight	7.8kg
Product Dimension (Flexible Hose not Included)	485×160×210mm		Packing Dimension (L×W×H)	600×300×240mm

Remarks:

- 1.The parameters are tested with 2.5m long flexible hose and Φ16mm round nozzle.
- 2.We may not publish formal notice in written form when the parameters changed after new improvements.
- 3.The manufacturing standards and testing stands subject to TOEX company standard: TXPS-ALPD-0900X(T)-2011.

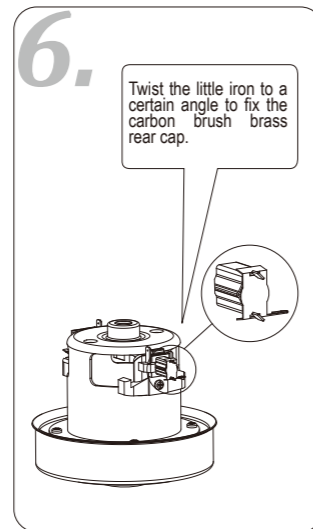
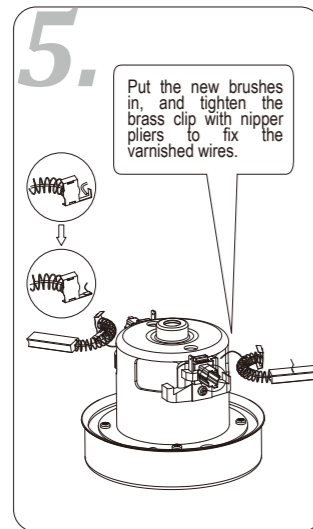
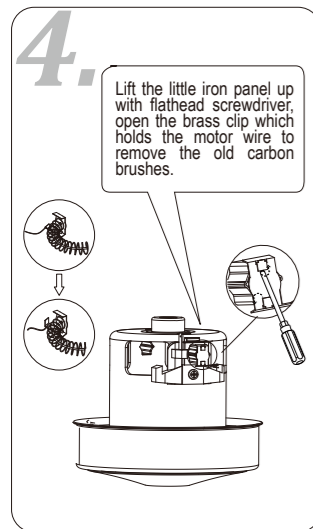
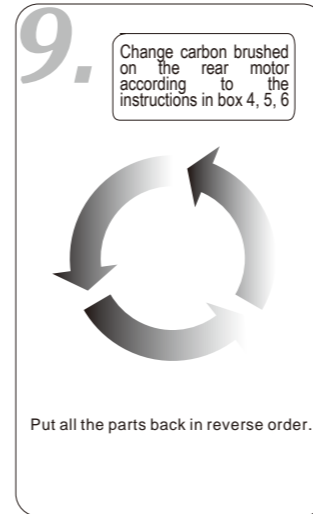
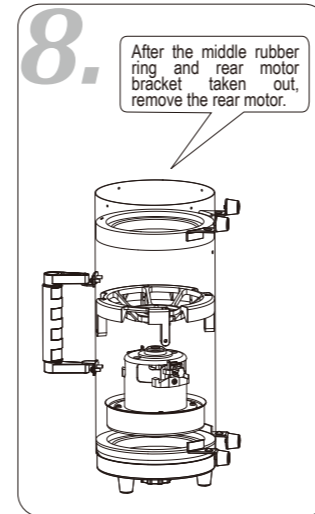
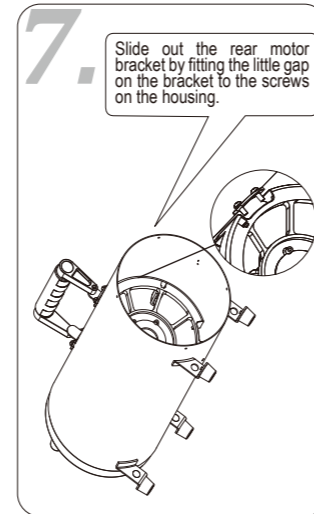
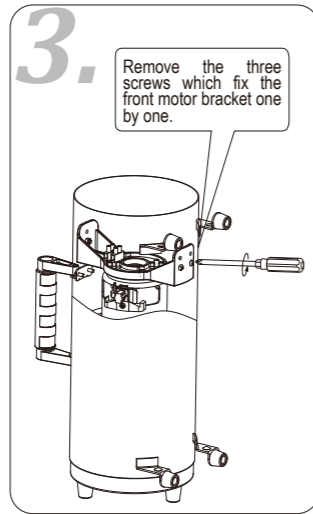
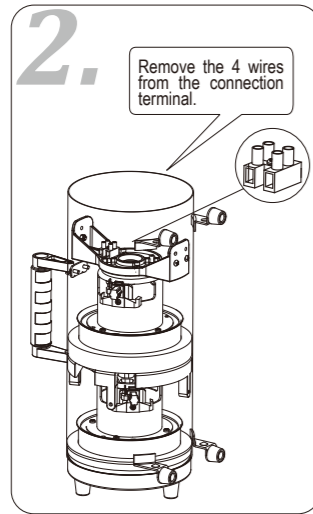
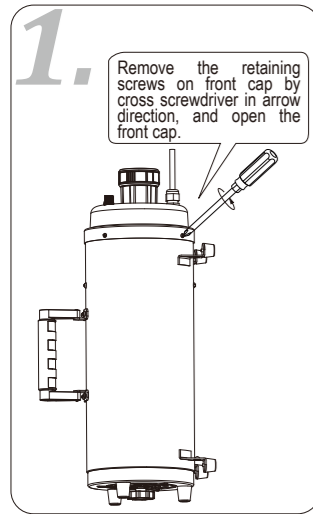
# Circuit Diagram



# Safety Instruction

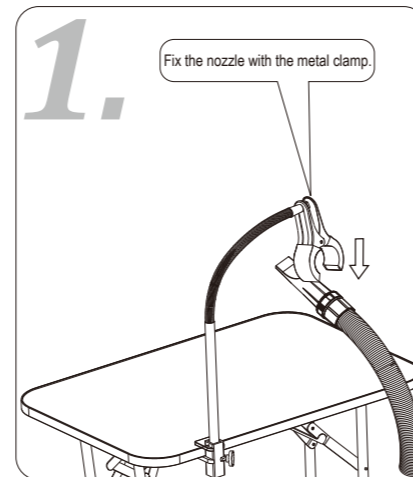
1. Pet dryer needs a single outlet which is at least 15A (25A in 110V territories) and has ground wire for itself. Please connect pet dryer with a correct outlet and do not share with other appliances.
2. Before switch on or turn off the power every time, please adjust the wind to the lowest, this can extend the lifetime of the machine.
3. Do not insert pins or any metal things into the clearance of the machine, otherwise that would be easy to get an electric shock and short circuit.
4. Do not use a cloth or bag to stop the diffuser or foam filter; otherwise it would damage the machine.
5. If the machine has been used for some time and malfunction occurs, you must ask the professional person to repair it. Do not disassemble by yourself.
6. If the power cord is damaged, discontinue use and have repaired by a professional.
7. Please keep children away when you operate the machine.
8. Do not hit the housing with fierce shock or drop the machine from high, which will damage the frame and motor.
9. Cardiopath or people with pacemaker are forbidden to use this machine.
10. Please hold the nozzle and hose firmly before turning the machine on, or the hose may wiggle and cause injury.
11. Must plug hose into the front cap connector before turning the machine on.
12. It's strictly forbidden to touch the components in the front cap connector with hand or any other objects in any situation.

# Carbon Brush



The power supply must be cut off before changing carbon brushes.

# Groomers' Third Arm



# Wall-mounting Bracket

